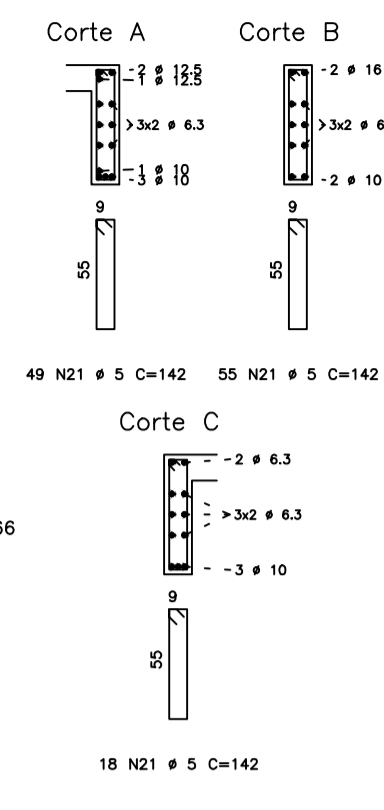
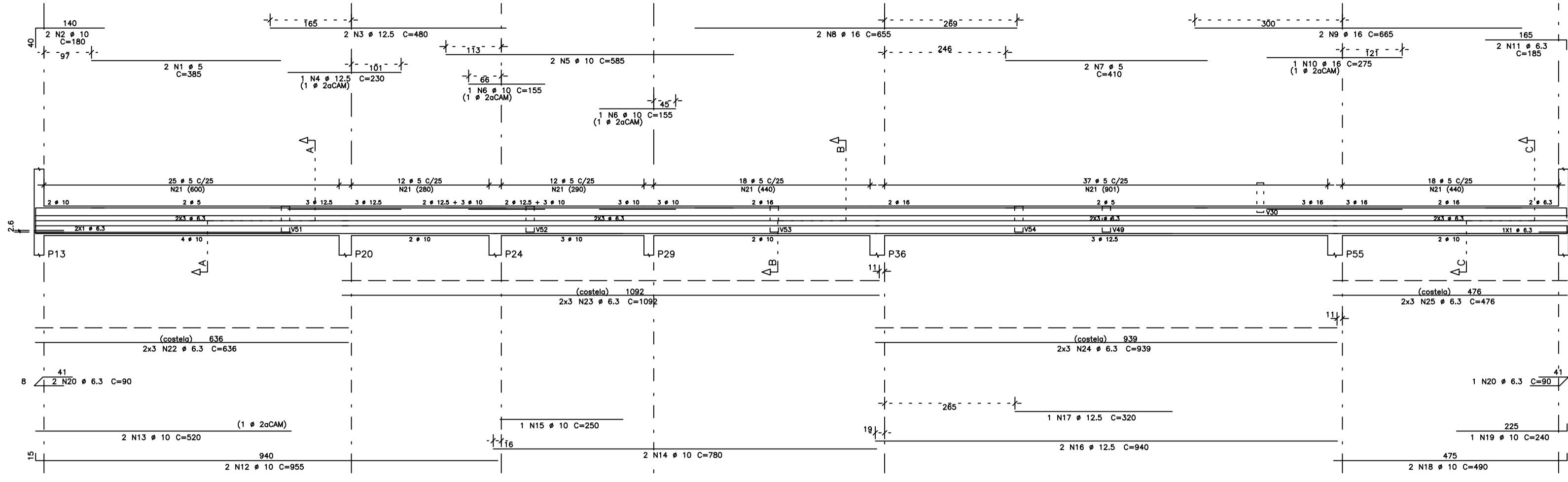
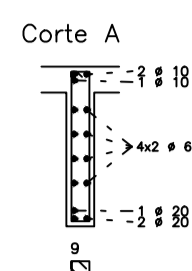
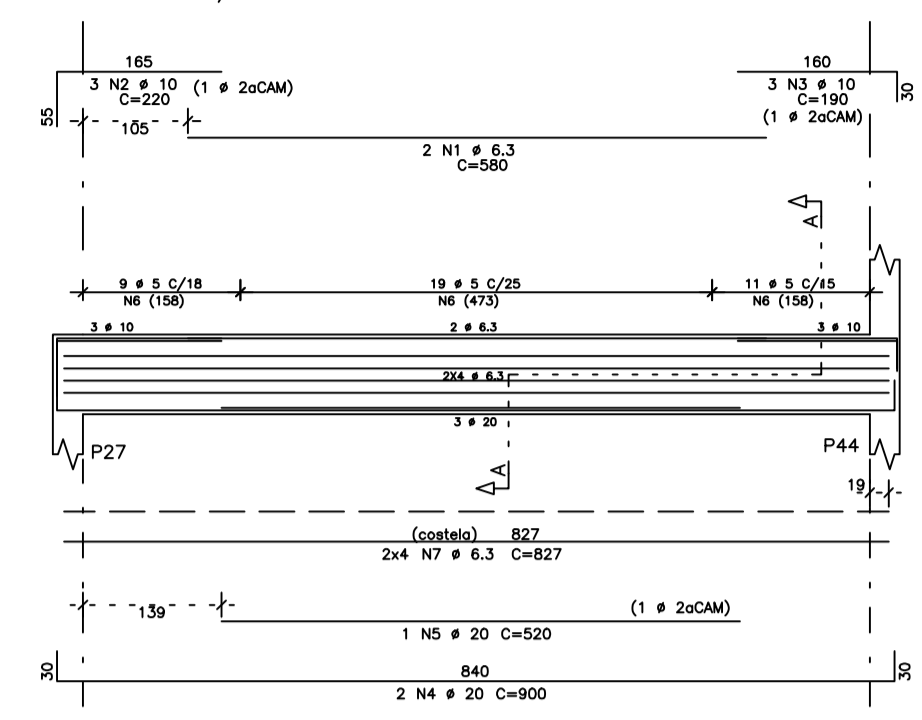


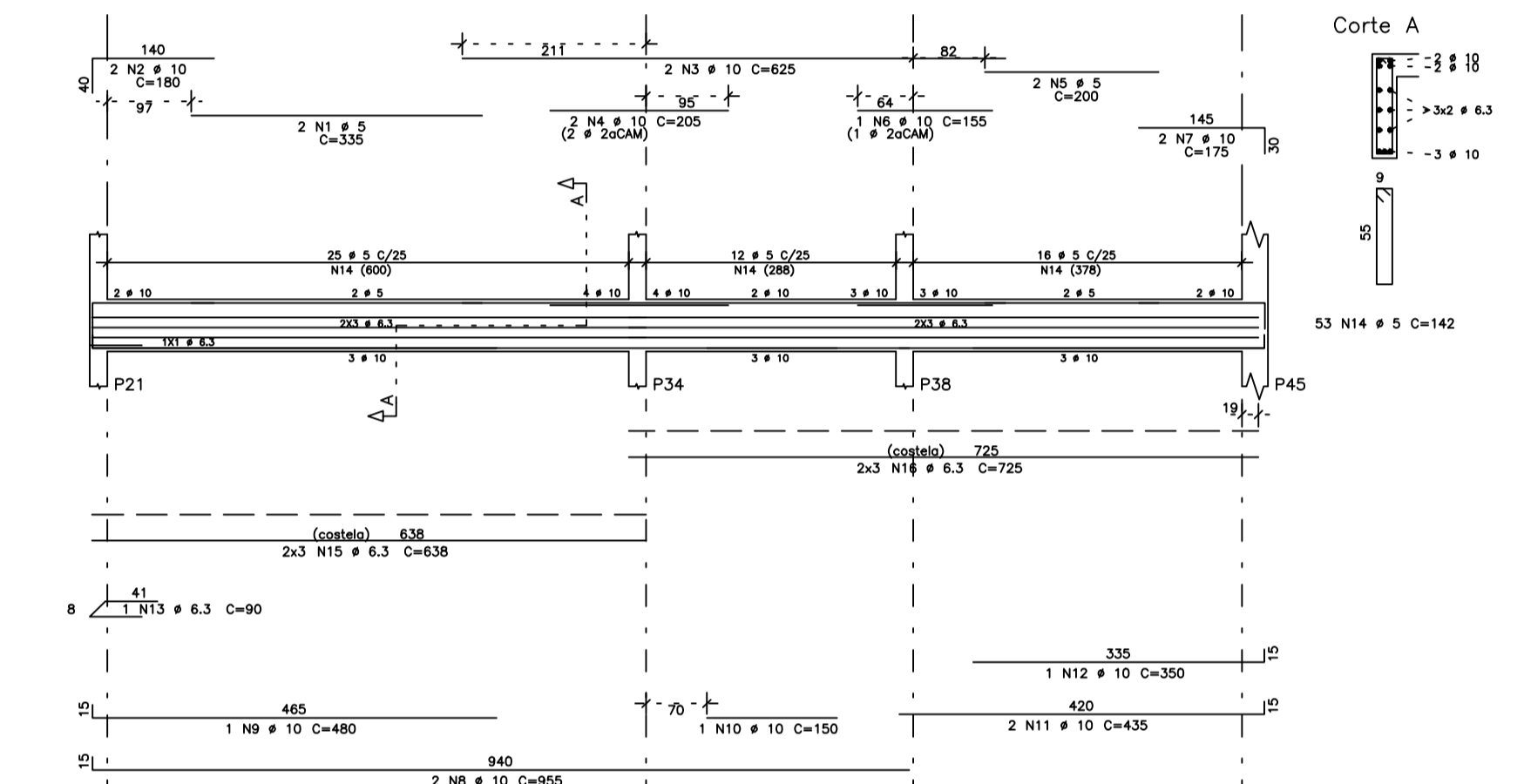
V5 14/60



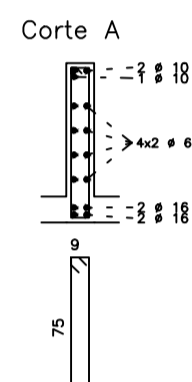
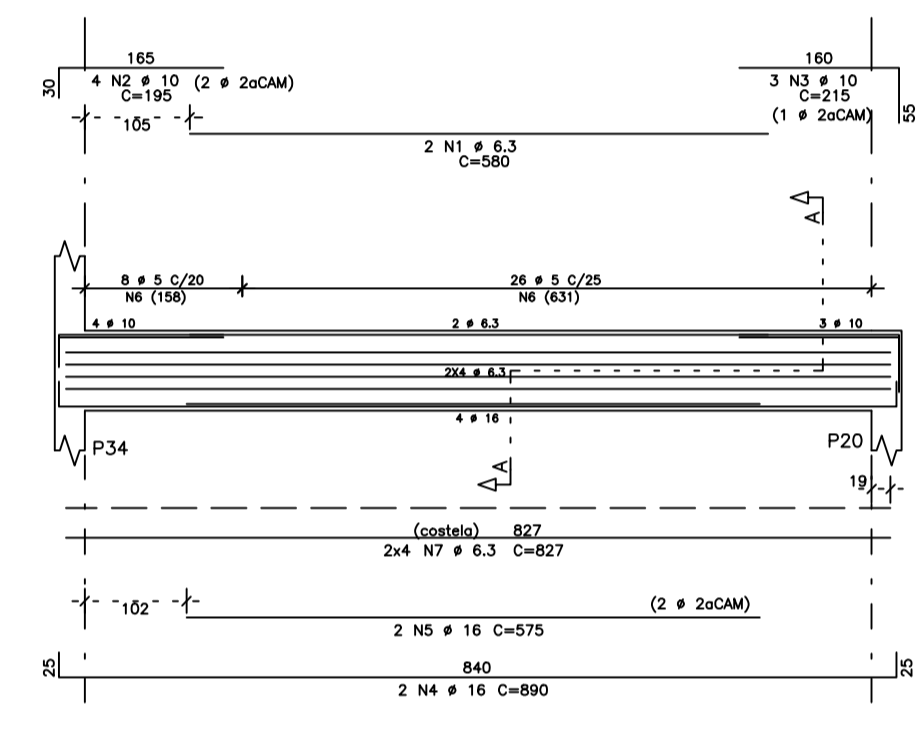
V12 14/80



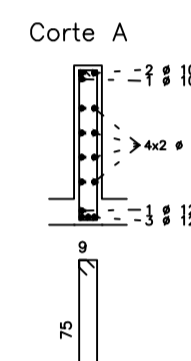
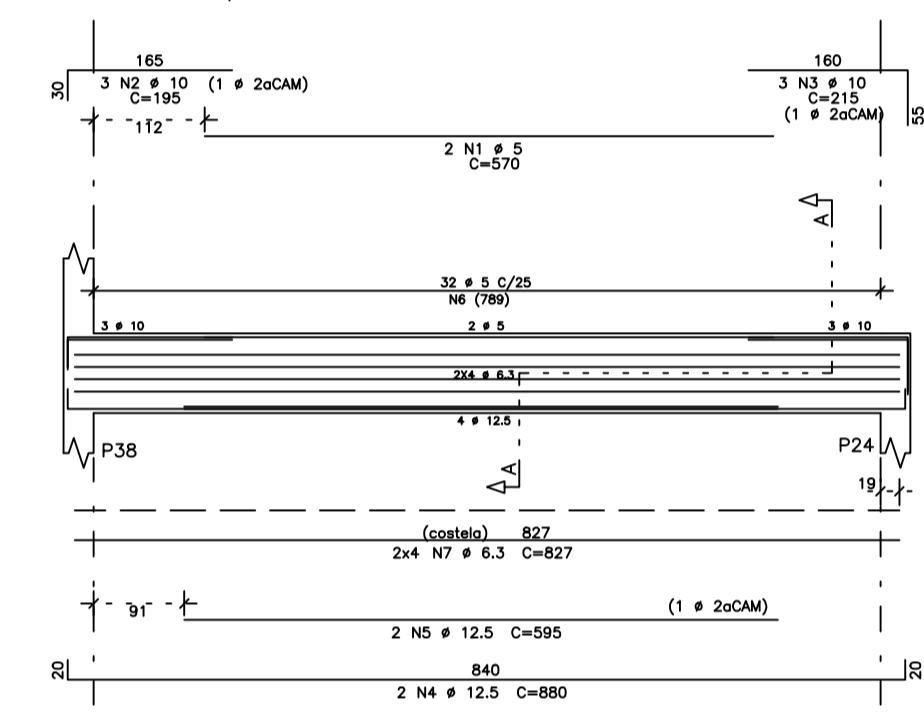
V9 14/60



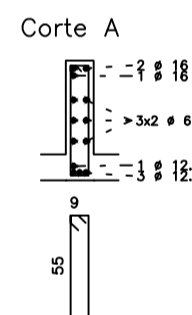
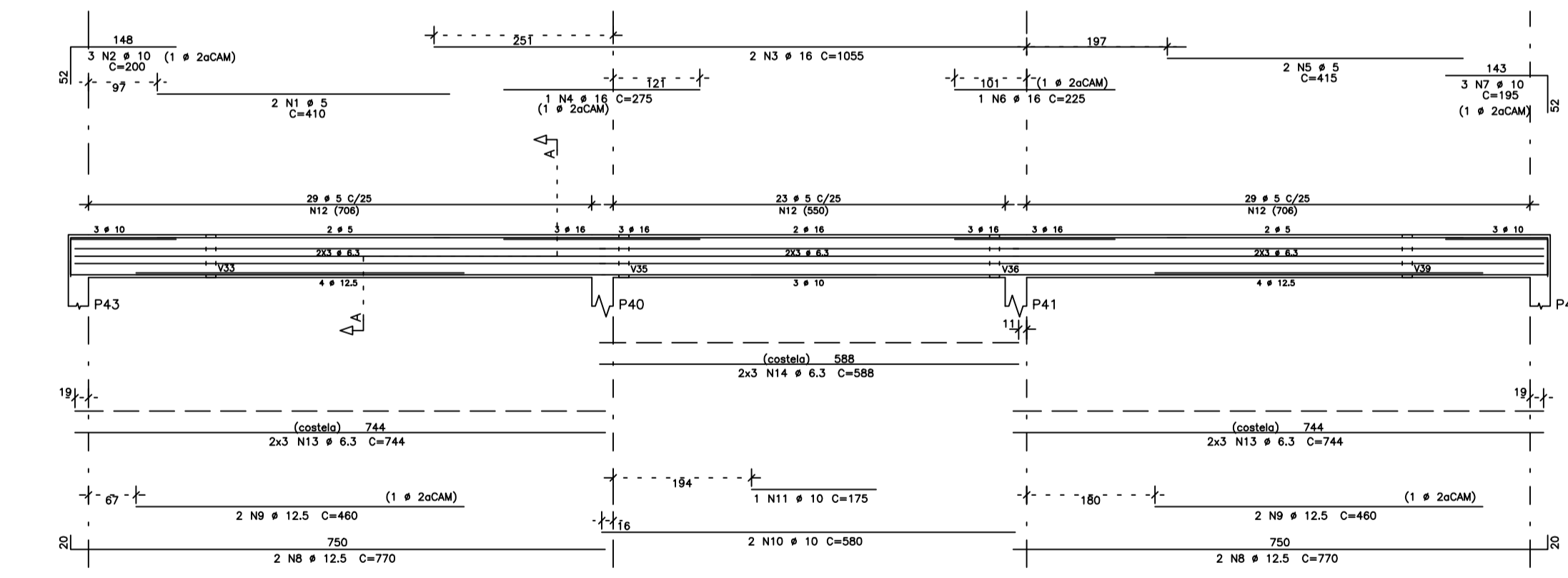
V13 14/80



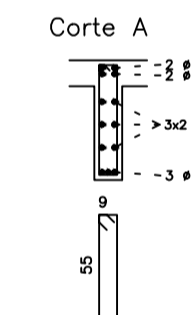
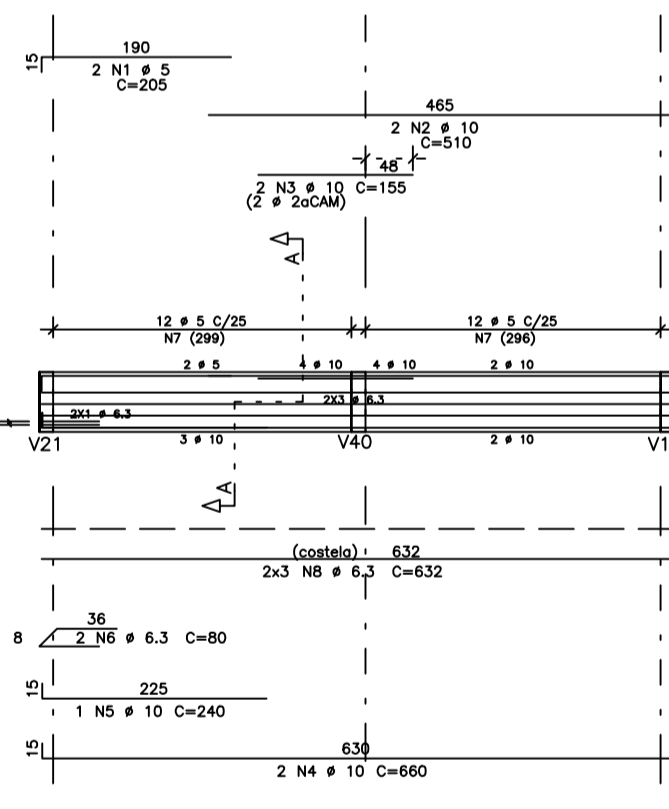
V14 14/80



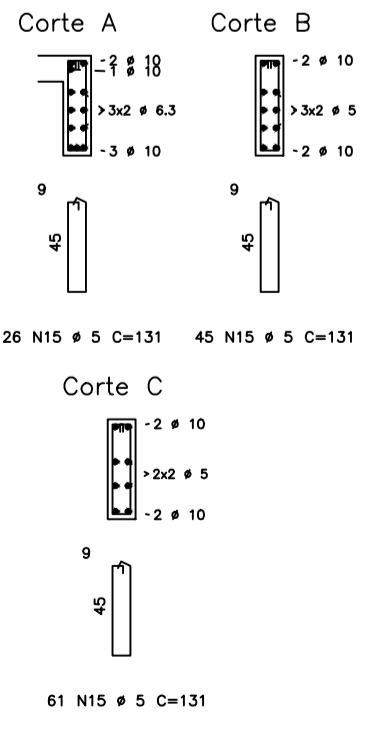
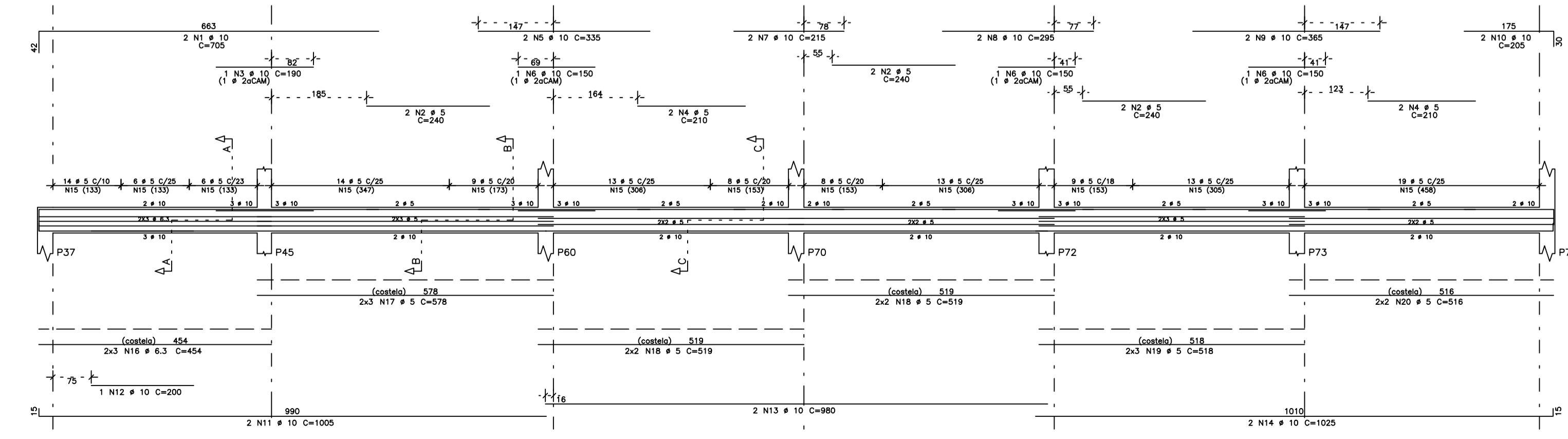
V15 14/60



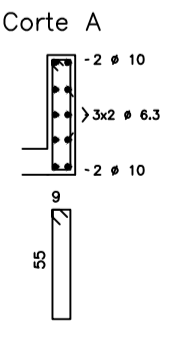
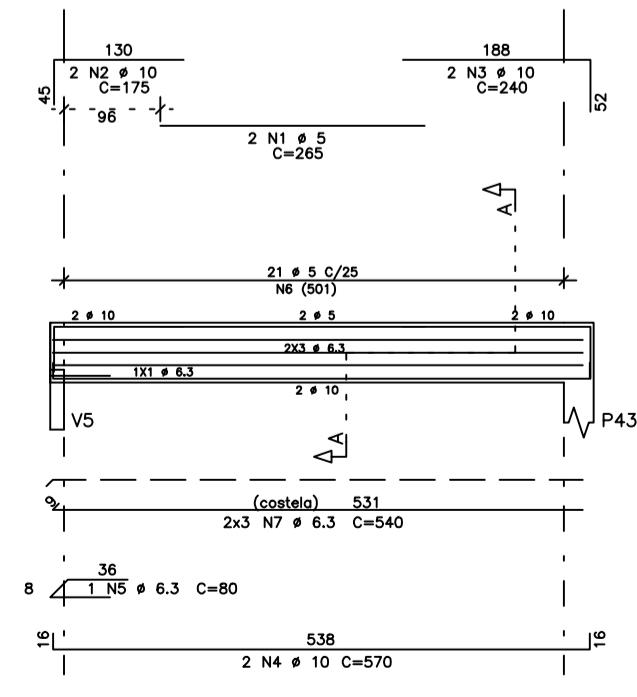
V24 14/60



V26 14/50





V30 14/60



ACO	POS	BIT (mm)	QUANT	COMPRIMENTO (cm)	UNID	TOTAL (cm)
V5						
60B	1	5	2	380	760	
50A	3	12.5	2	180	360	
50A	5	10	2	480	960	
50A	10	12.5	2	230	460	
50A	5	10	2	585	1170	
60B	5	5	2	200	400	
60B	7	5	2	410	820	
50A	12	2.5	2	275	550	
50A	9	18	2	665	1330	
50A	18	2	2	275	550	
50A	11	6.3	2	180	360	
50A	10	2	2	780	1560	
50A	13	10	2	520	1040	
50A	16	10	2	480	960	
50A	15	10	1	250	250	
50A	17	12.5	1	320	320	
50A	18	10	1	480	480	
50A	19	10	1	240	240	
50A	20	6.3	1	63	63	
60B	21	5	122	142	17224	
50A	22	6.3	6	85	510	
50A	23	6.3	6	1092	6955	
50A	24	6.3	6	439	2834	
60B	25	6.3	6	439	2834	
V9						
60B	1	5	2	335	670	
50A	2	10	2	180	360	
50A	3	10	2	625	1250	
50A	4	10	2	205	410	
60B	5	5	2	155	310	
50A	6	10	1	155	155	
50A	7	10	1	175	175	
50A	8	10	2	955	1910	
50A	9	10	2	480	960	
50A	10	10	1	150	150	
50A	11	10	1	435	435	
50A	12	10	1	350	350	
50A	13	6.3	1	63	63	
60B	14	5	53	142	7526	
50A	15	6.3	6	85	510	
50A	16	6.3	6	725	4350	
V12						
50A	1	6.3	2	580	1160	
50A	2	10	2	220	440	
50A	3	10	2	150	300	
50A	4	20	2	900	1800	
50A	5	20	1	520	520	
60B	6	5	39	182	7098	
50A	7	6.3	3	827	2581	
V13						
50A	1	6.3	2	580	1160	
50A	2	10	4	195	780	
50A	3	10	2	215	430	
50A	4	16	2	890	1780	
50A	5	16	2	575	1150	
60B	6	5	34	182	6188	
50A	7	6.3	8	827	2581	
V14						
60B	1	5	3	1140	3420	
50A	2	10	3	190	570	
50A	3	10	2	210	420	
50A	4	12.5	2	585	1170	
60B	5	5	32	182	5824	
50A	7	6.3	8	827	2581	
V15						
60B	1	5	2	410	820	
50A	3	10	2	200	400	
50A	3	16	2	1055	2110	
50A	5	5	2	415	830	
50A	6	12.5	4	370	740	
50A	7	10	3	195	585	
50A	8	12.5	4	370	900	
50A	9	12.5	4	460	1840	
50A	10	10	2	580	1160	
50A	11	10	1	175	175	
50A	12	5	81	142	11502	
50A	13	6.3	12	744	8928	
50A	14	6.3	6	588	3528	
V24						
60B	1	5	2	205	410	
50A	2	10	2	510	1020	
50A	3	10	2	155	310	
50A	4	10	2	660	1320	
50A	5	10	1	240	240	
50A	6	6.3	2	80	160	
60B	7	5	24	142	3408	
50A	8	6.3	6	632	3792	
V26						
50A	1	10	2	795	1410	
60B	2	5	6	240	1440	
50A	3	10	1	180	180	
60B	4	5	4	210	840	
50A	5	10	2	335	670	
50A	6	10	3	150	450	
50A	7	10	2	215	430	
50A	8	10	2	295	590	
50A	9	10	2	385	770	
50A	10	10	2	205	410	
50A	11	10	2	1055	2110	
50A	12	10	1	200	200	
50A	13	10	1	880	880	
50A	14	10	2	1025	2050	
50A	15	10	1	1025	1025	
50A	16	6.3	132	454	17922	
60B	17	5	6	578	3468	
60B	18	5	6	518	3108	
60B	19	5	6	518	3108	
60B	20	5	4	530	2060	
V30						
60B	1	5	2	285	570	
50A	2	10	2	175	350	
50A	3	10	2	480	960	
50A	4	10	2	570	1140	
50A	5	6.3	2	80	160	
60B	6	5	21	142	2982	
50A	7	6.3	6	540	3240	

RESUMO AÇO CA 50-60			
ACO	BIT (mm)	COMPR (m)	PESO (kg)
60B	5	1008	161
50A	6.3	724	181
50A	10	365	230
50A	12.5	113	113
50A	16	85	135
50A	20	8	28
Peso Total	60B =	23	161 kg
Peso Total	50A =		717 kg

02	MAR/16	ARTHUR VINICIUS	
01	SET/13	REORG. ORDEM PRANCHAS	
REVISÃO N°	DATA	NOME	ASSINATURA
AUTORES DO PROJETO E ART. ORÇ.		RESPONSÁVEL PELA EXECUÇÃO E ART.	
PROPRIETÁRIO/PRODUTOR: TERRES FERRAZ DE ANDARAÍ		CONSTRUTORA: F&M	
			
SETOR: ANTONIO VENANCIO CASTELO BRANCO PROJETO DE ESTRUTURA DE CONCRETO CONTRATO: Armadura Vigas Foro V5 / V9 / V12 / V13 / V14 / V15 / V24 / V26 / V30 LOCALIZAÇÃO: CAMPUS HUMAITÁ BR 230, KM 05 MUNICÍPIO: HUMAITÁ AM UF: AM ENDEREÇO: FARMACIA BARBET CONGREGADOS FORO HUMAITÁ AM TELEFONE: www.flam.edu.br			
			EST 09/21