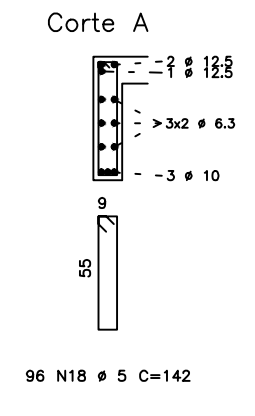
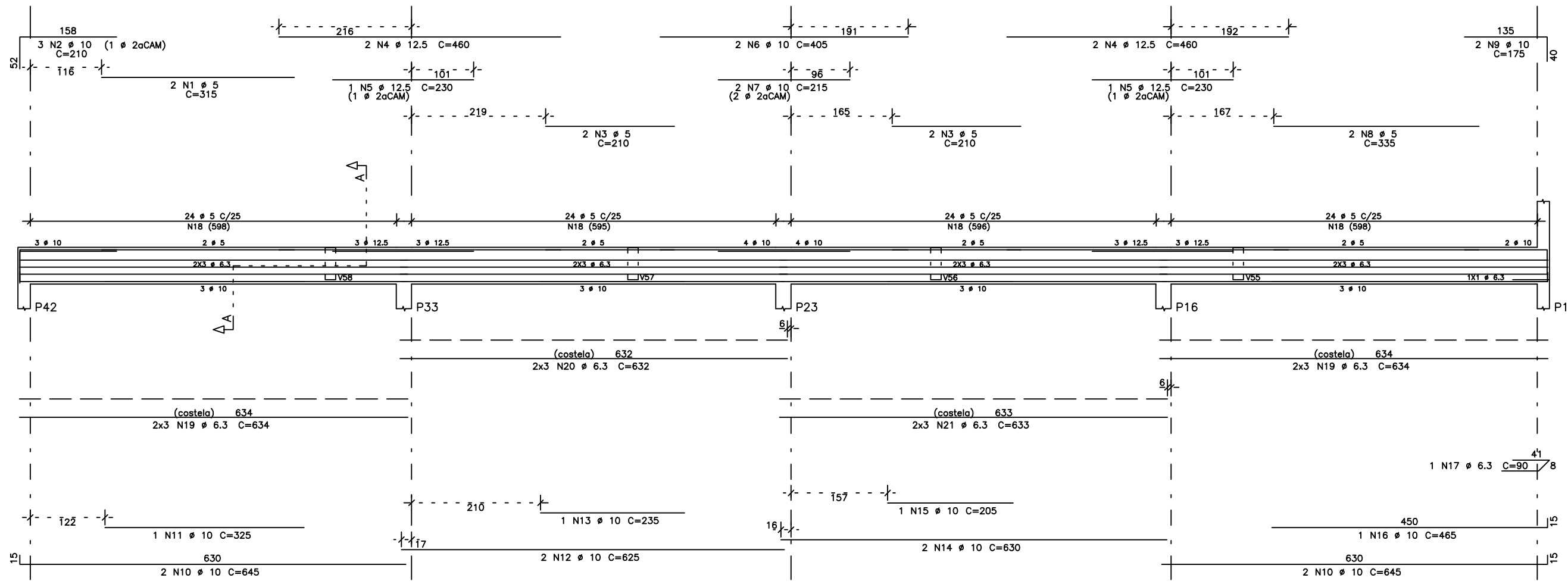
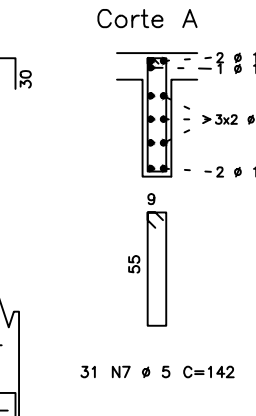
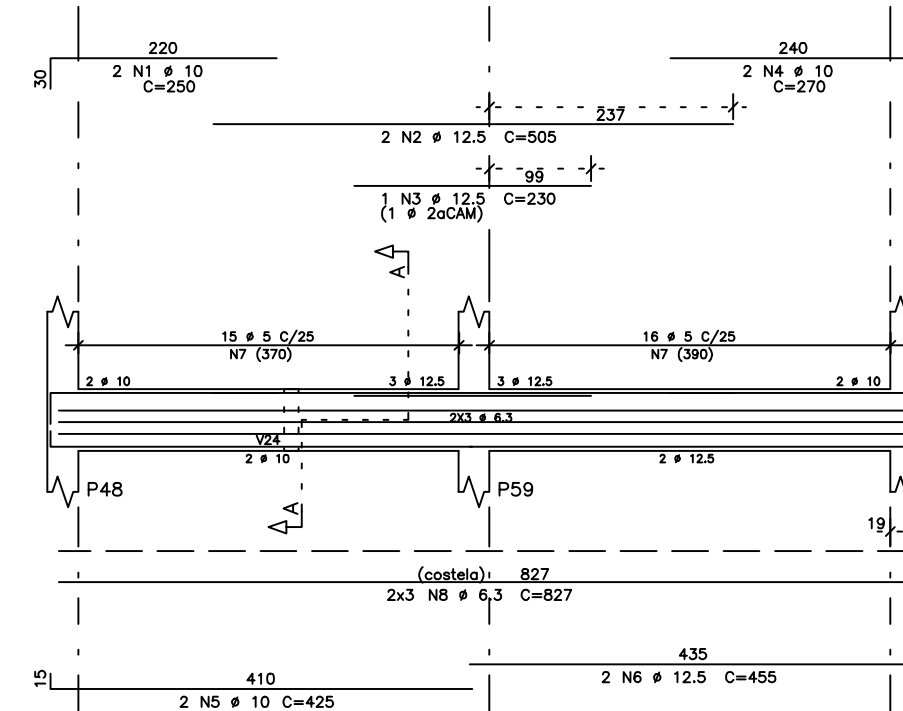


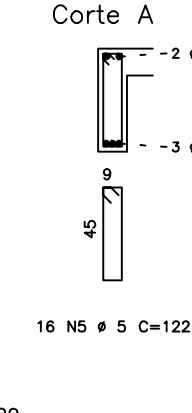
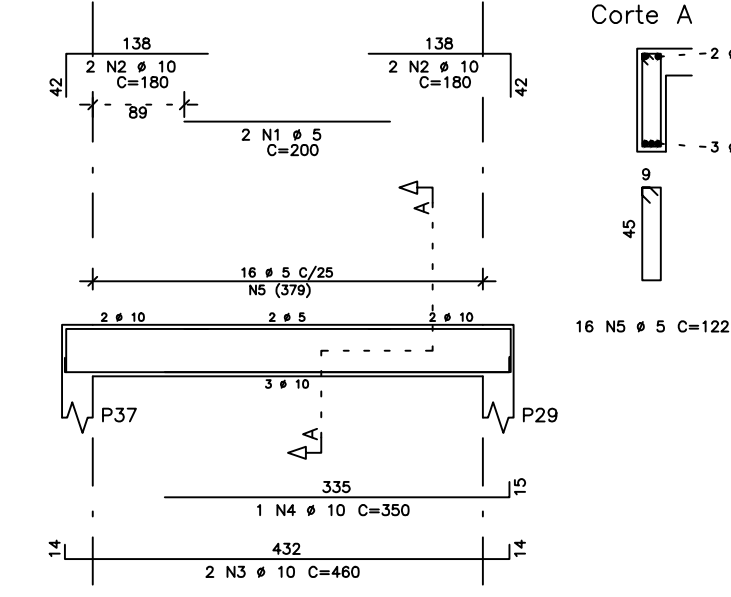
V16 14/60



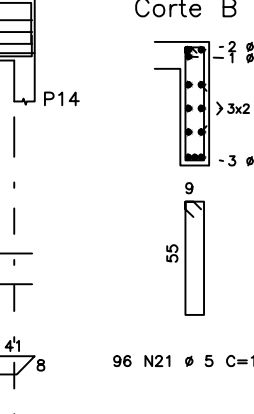
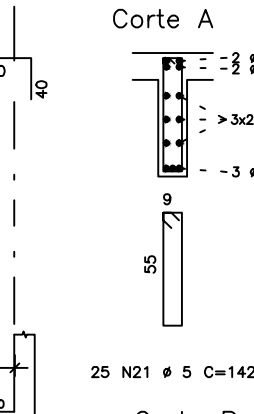
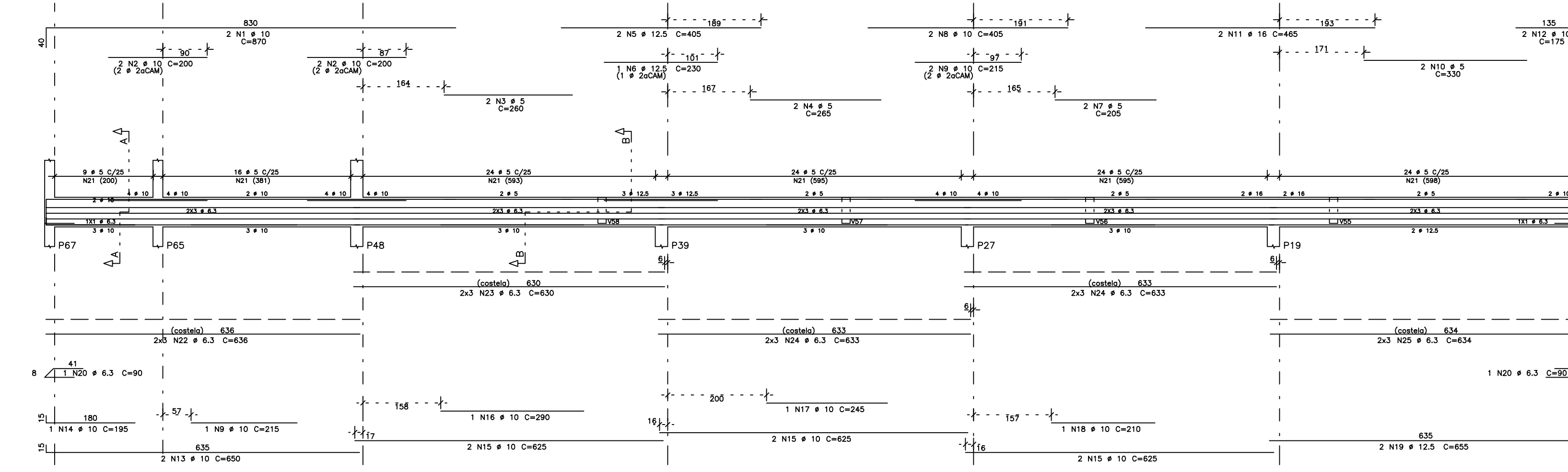
V19 14/60



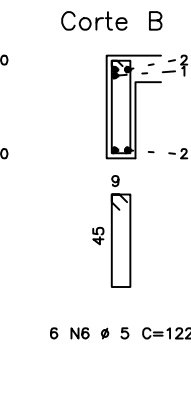
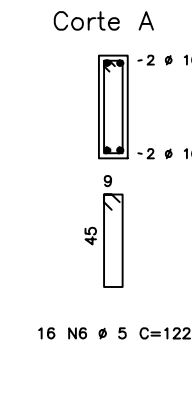
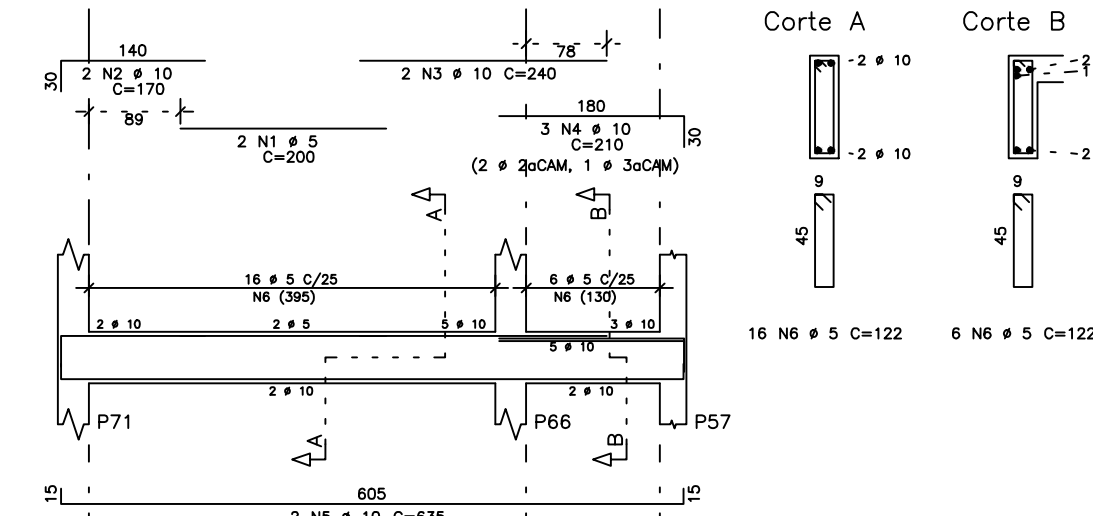
V27 14/50



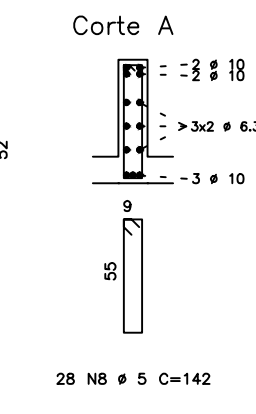
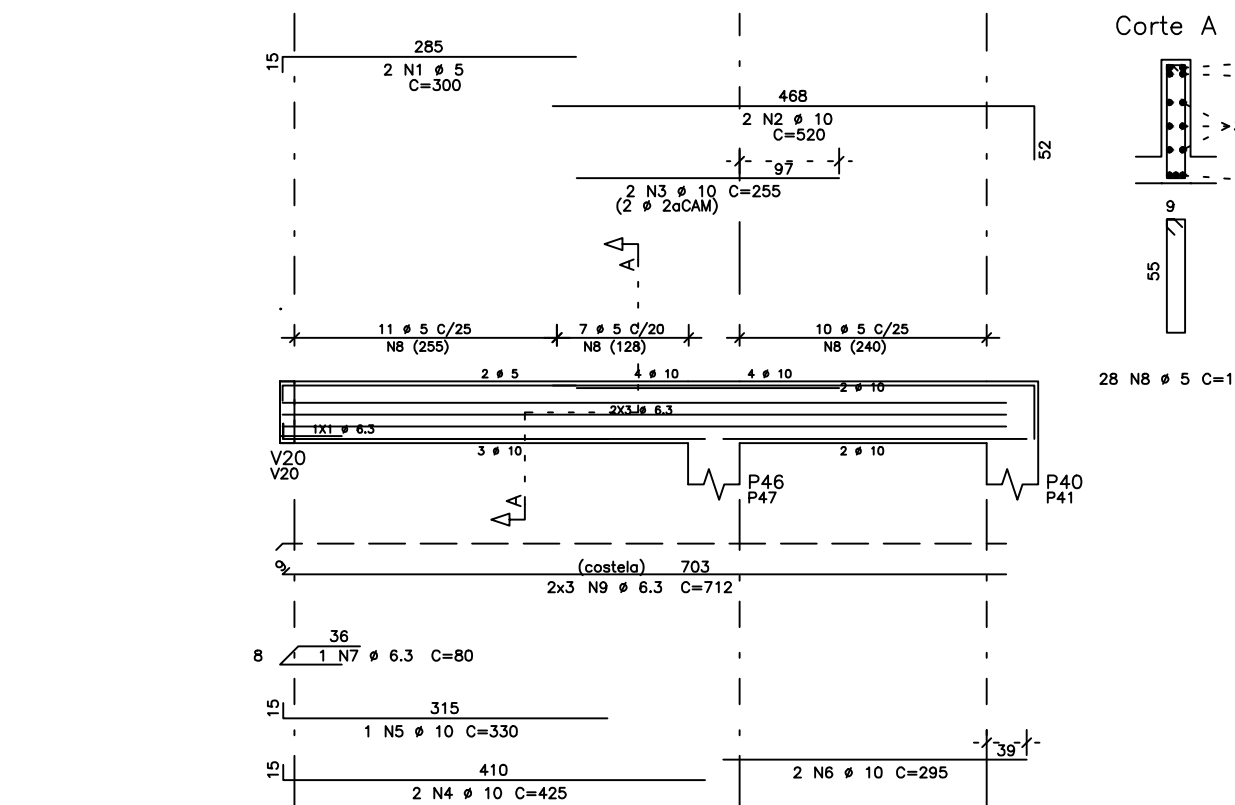
V23 14/60



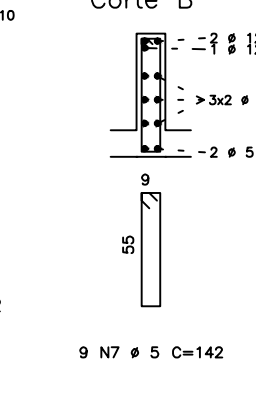
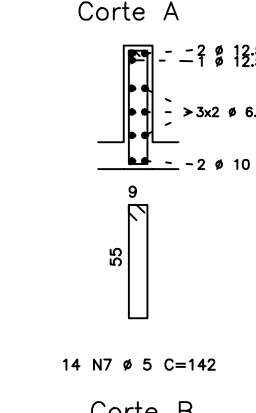
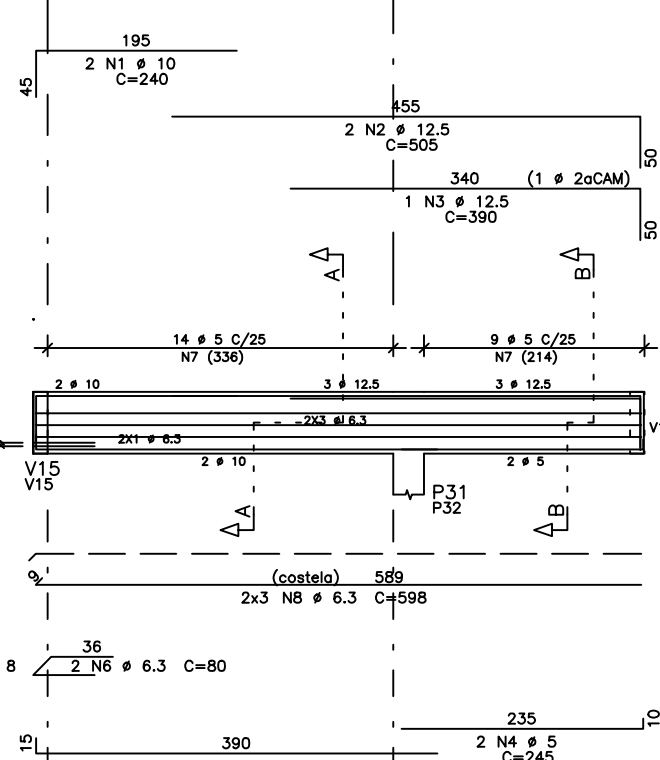
V31 14/50



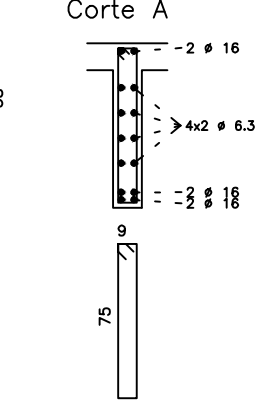
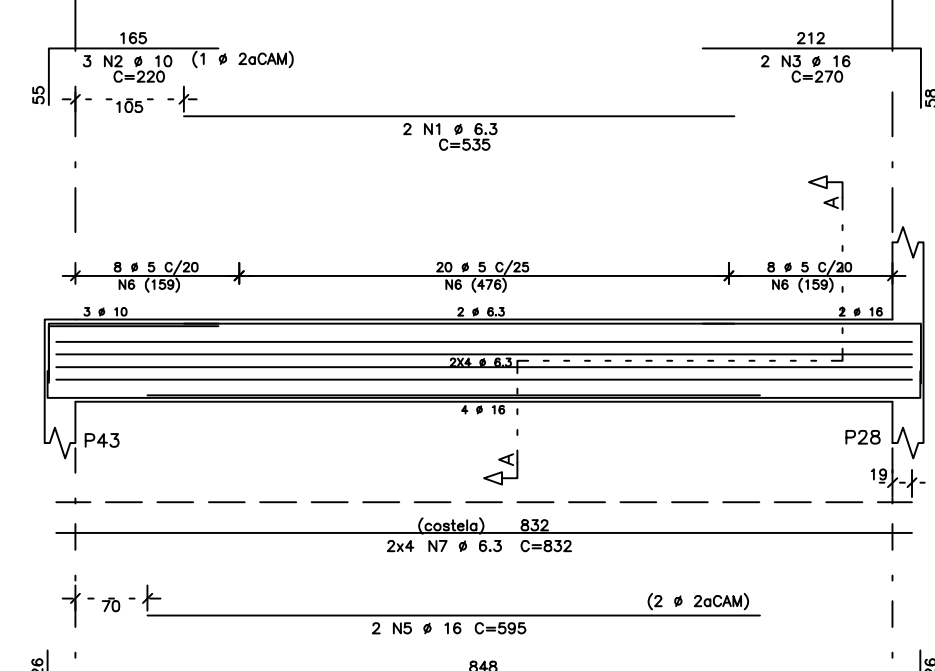
V34=V37 14/60



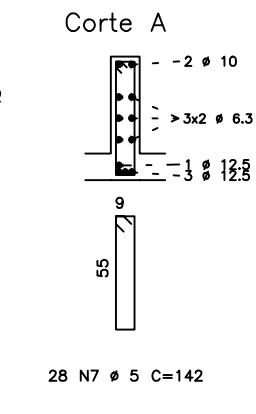
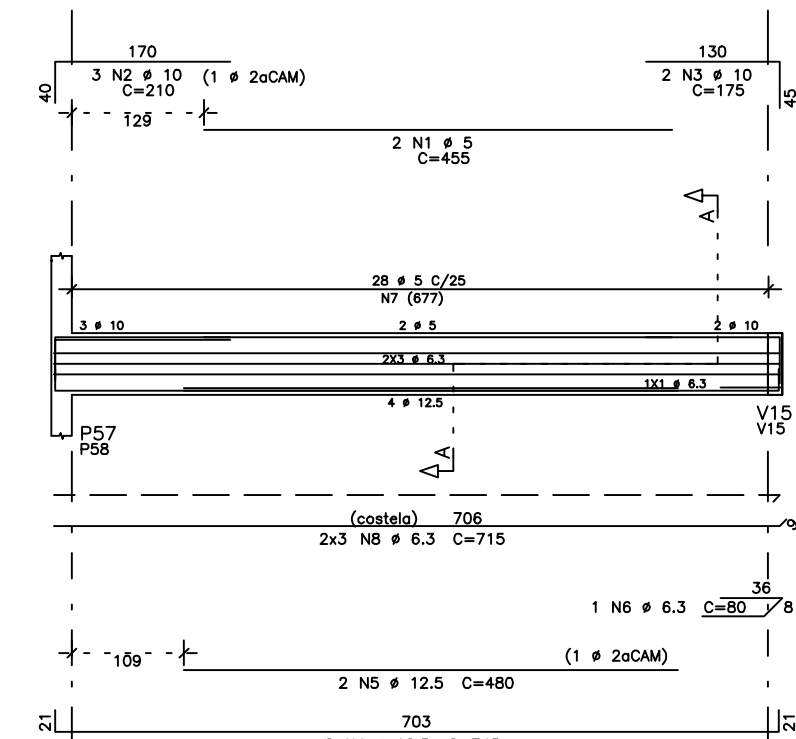
V35=V36 14/60



V32 14/80



V33=V39 14/60



ACO	POS	BIT	QUANT	COMPRIMENTO	UNID	TOTAL
				(cm)		(cm)
<b>V16</b>						
60B	1	5	2	315	430	
50A	2	10	3	215	430	
60B	3	5	4	210	840	
50A	4	10	2	460	1640	
50A	5	12.5	2	230	550	
50A	6	10	2	405	810	
50A	7	10	2	215	430	
60B	8	5	2	335	670	
50A	9	10	2	175	350	
50A	10	10	4	645	2580	
50A	11	10	1	325	650	
50A	12	10	2	625	1250	
50A	13	10	1	235	470	
50A	14	10	2	630	1260	
50A	15	10	1	605	1210	
50A	16	10	1	465	930	
50A	17	6.3	1	90	180	
60B	18	5	96	142	13632	
50A	19	6.3	54	142	7668	
50A	20	6.3	6	632	3792	
50A	21	6.3	6	534	3054	
<b>V19</b>						
50A	1	10	2	250	500	
50A	2	12.5	2	230	460	
50A	3	12.5	1	230	230	
50A	4	10	2	230	460	
50A	5	10	2	425	850	
50A	6	12.5	2	455	910	
60B	7	5	31	142	4402	
50A	8	6.3	6	827	4962	
<b>V23</b>						
50A	1	10	2	870	1740	
50A	2	10	2	200	400	
60B	3	5	2	280	560	
60B	4	4	2	265	530	
50A	5	12.5	2	405	810	
50A	6	12.5	1	230	460	
60B	7	5	2	205	410	
50A	8	10	2	405	810	
50A	9	10	3	215	645	
60B	10	5	2	330	660	
50A	11	16	2	485	970	
50A	12	10	2	330	660	
50A	13	10	2	650	1300	
50A	14	10	1	195	390	
50A	15	10	6	825	3750	
50A	16	10	1	290	580	
50A	17	10	1	245	490	
50A	18	10	1	210	420	
50A	19	12.5	2	605	1210	
50A	20	6.3	2	90	180	
60B	21	6.3	121	142	17182	
50A	22	6.3	6	636	3816	
50A	23	6.3	12	633	3798	
50A	24	6.3	12	633	7596	
50A	25	6.3	12	534	3054	
<b>V27</b>						
60B	1	5	2	200	400	
50A	2	10	4	180	720	
50A	3	10	2	460	920	
50A	4	10	1	350	700	
60B	5	5	16	122	1952	
<b>V31</b>						
60B	1	5	2	200	400	
50A	2	10	2	240	480	
50A	3	10	1	210	420	
50A	4	10	2	635	1270	
60B	5	5	22	122	2684	
<b>V32</b>						
60B	1	6.3	2	535	1070	
50A	2	10	3	220	660	
50A	3	16	2	270	540	
50A	4	16	2	900	1800	
50A	5	16	2	595	1190	
60B	6	5	36	182	6552	
60B	7	6.3	8	832	6656	
<b>V33=V39</b>						
60B	1	5	4	455	1820	
50A	2	10	6	210	1260	
50A	3	10	4	525	2100	
50A	4	12.5	4	745	2980	
50A	5	12.5	4	480	1920	
50A	6	6.3	2	80	160	
60B	7	5	56	142	7952	
60B	8	6.3	12	715	8580	
<b>V34=V37</b>						
60B	1	5	4	300	1200	
50A	2	10	4	525	2100	
50A	3	10	4	255	1020	
50A	4	10	4	425	1700	
50A	5	10	2	330	660	
50A	6	10	4	295	1180	
50A	7	6.3	1	80	160	
60B	8	5	56	142	7952	
60B	9	6.3	12	715	8544	
<b>V35=V36</b>						
50A	1	10	4	240	960	
50A	2	12.5	4	505	2020	
50A	3	12.5	2	390	780	
60B	4	5	4	245	980	
50A	5	10	4	405	1620	
50A	6	6.3	4	80	320	
60B	7	5	40	142	5680	
60B	8	6.3	12	715	8544	

ACO	RESUMO	CA	50-60	PESO
	(mm)	COMPR	(m)	(kg)
60B	6.3	779	125	125
50A	10	273	180	180
50A	12.5	145	145	145
50A	16	45	71	71
Peso total 60B =				125 kg
Peso total 50A =				632 kg

02	MAR/16	ARTHUR VINICIUS	
01	SET/13	REORG. ORDEM FRANCHAS	
REVISÃO Nº	DATA	NOME	ASSINATURA
AUTORES DO PROJETO E ART:			
CREA:			
PROPRIETÁRIO/PROCURADOR: Instituto Federal do Amazonas		RESPONSÁVEL PELA EXECUÇÃO E ART:	
BRASIL AMAZONAS PROJETO DE ESTRUTURA DE CONCRETO CONTEUDO: Armadura Vigas Forro V16 / V19 / V23 / V27 / V31 / V32 / V33-V39 V34-V37 / V35-V36 HISTORICAL: CAMPUS HUMAITÁ BR 230, KM 05 ENDEREÇO: BR 230, KM 05 ANEXO: AM HUMAITÁ ENDEREÇO: BR 230, KM 05 TELEFONE: TELEFONE: HOME PAGE: www.ifam.edu.br			
<b>AMAZONAS</b> <b>EXP III</b> <b>EST. CONCRETO</b>			EST 10/21